



Stools

Technical Manual

EFFICIENCY IN DENTISTRY®

Specifications

Generation™	iv-2
Simplicity by DentalEZ™	iv-3

Cleaning & Disinfecting

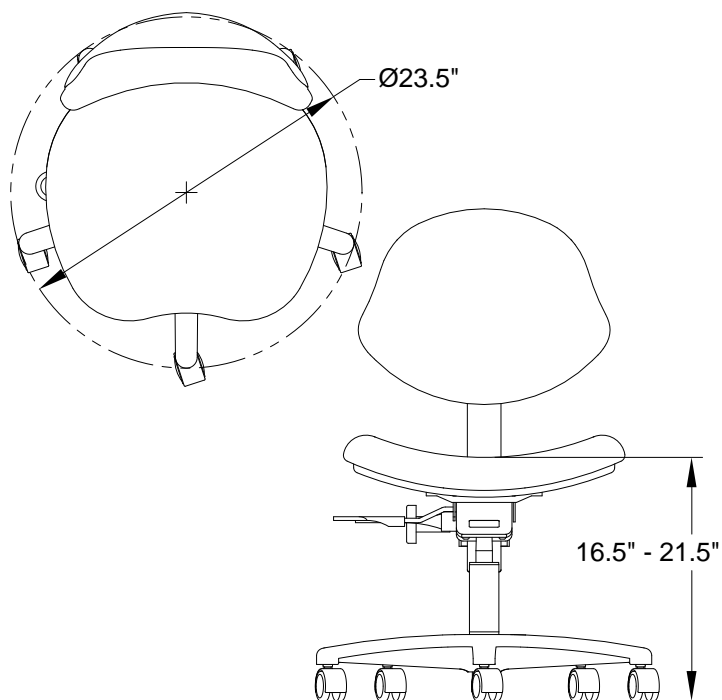
All DentalEZ Stools	iv-4-5
---------------------------	--------

Parts Lists

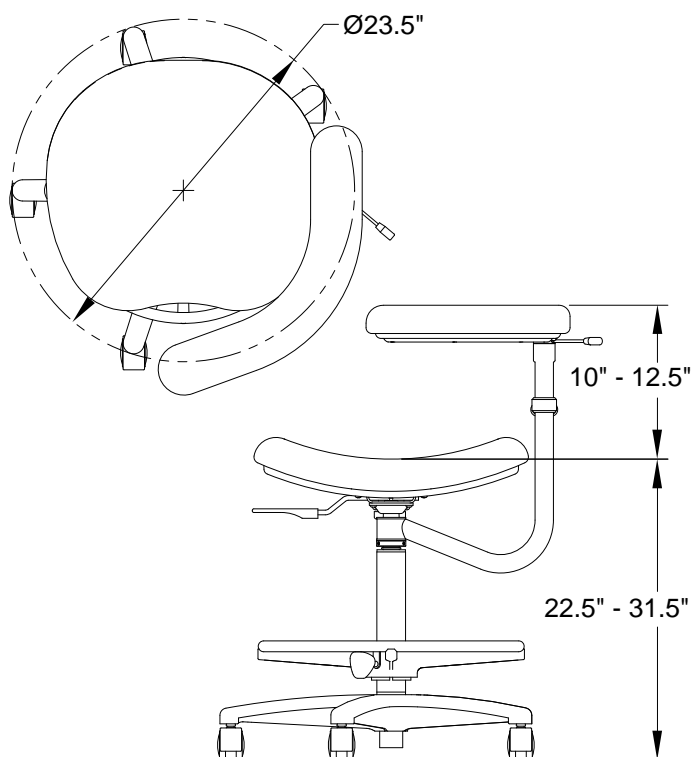
Generation	iv-6
Simplicity	iv-7

Shipping Carton Information: 22-1/2" L x 24" W x 17-1/2" H, 34 lbs.

Doctor's Stool



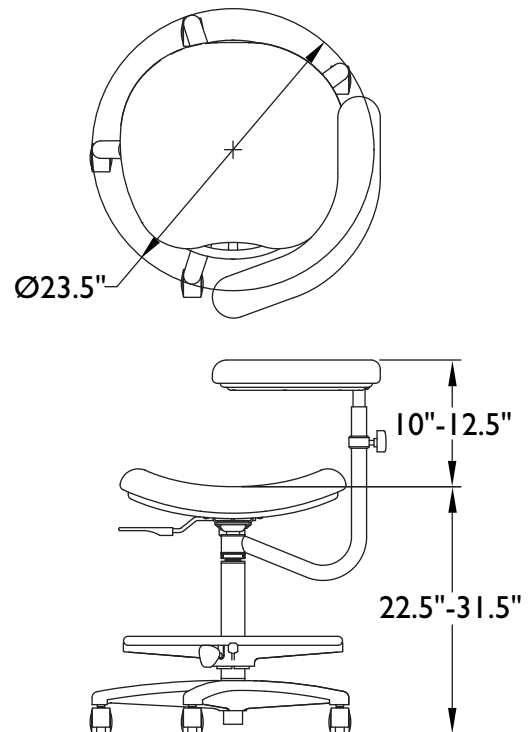
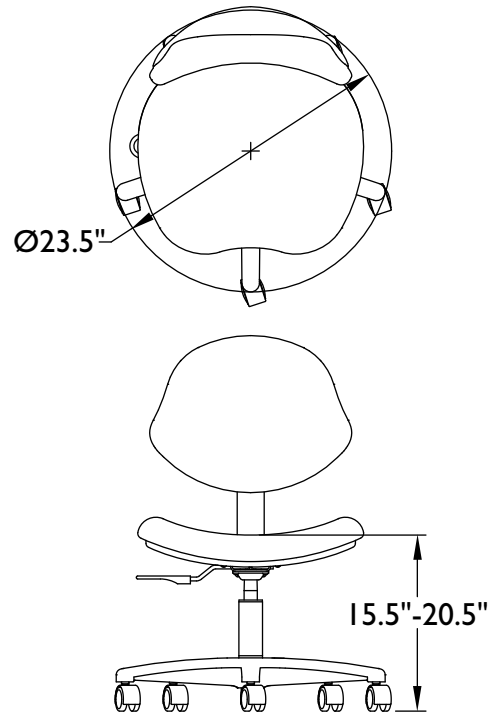
Assistant's Stool



Simplicity by DentalEZ™

Shipping Carton Information: 22-1/2" L x 24" W x 17-1/2" H, 34 lbs.

SPECIFICATIONS



— WARNING —

Improper cleaning and disinfection techniques could lead to cross-contamination. Therefore, prior to each use, properly clean and disinfect the chair's exterior in accordance with normal dental procedures.

Before attempting to clean or disinfect the DentalEZ Chair, please read the following instructions carefully.

— NOTICE —

The upholstery cleaning/disinfecting information contained in this Section is not a guarantee but represents highly recommended procedures obtained from the upholstery manufacturers.

Cleaning

— IMPORTANT —

Pay strict attention to all the cleaning product manufacturer's warnings and cautions.

Because any cleaning product may be harmful or irritating:

- ✓ Use protective gloves and eye protection in a well ventilated area.
- ✓ Do not inhale or swallow any cleaning product.
- ✓ Protect surrounding surfaces and clothing from exposure.

When using strong cleaning agents, such as bleach or alcohol, it is advisable to first test them in an inconspicuous area to be certain they will not damage the upholstery, plastic or metal surfaces of the J/V-Generation Chair. *(Results may vary under actual conditions.)*

— CAUTION —

Cleaning agents, other than household bleach or rubbing alcohol, may contain harsh or unknown solvents. Also, these other cleaning agents are subject to formula changes made by the manufacturer without notice.

Chair Upholstery

1. To remove light soil:

- a. Prepare a solution comprised of one part household dishwashing liquid and nine parts warm water.
- b. Apply the dishwashing liquid solution to the upholstery using a sponge or soft, damp cloth. *If necessary, a soft bristle brush may be used.*
- c. Using a soft cloth dampened in clean water, wipe away any residue and dry.

2. To remove heavy soil:

- a. Dampen a soft, white cloth with lighter fluid (naphtha) and rub the area gently.
- b. Using a soft cloth rinse thoroughly with clean water and pat surface dry.

3. To remove stains using bleach:

- a. Prepare a solution comprised of one part household bleach (sodium hypochlorite) and nine parts water.
- b. Apply the bleach solution to the stain using a dampened, soft, white cloth.
- c. Allow the bleach solution to puddle on the affected area, or apply a bleach solution-soaked cloth to the area for approximately 30 minutes.
- d. Using a soft cloth dampened in plain water, rinse the treated area thoroughly to remove any bleach residue.

4. To remove stains using alcohol:

- a. Dampen a soft, white cloth with rubbing alcohol and rub the stain gently.
- b. Using a soft cloth dampened in clean water, rinse the treated area thoroughly to remove any alcohol residue and pat dry.

5. To restore luster:

- a. Apply a light coat of spray furniture wax containing lemon.
- b. Wait 30 seconds and lightly buff the surface using a clean, white cloth.

All DentalEZ Chairs & Stools

Ultraleather™

- ◆ Spot clean with mild soap and water
- ◆ Air dry or dry quickly with warm setting of a hair dryer
- ◆ For stubborn stains, use mild solvent
- ◆ For extremely stubborn stains, an alcohol-based solvent can be used
- ◆ Dry cleanable by conventional methods using commercial dry cleaning solvents

Ultraleather is a trademark of Ultrafabrics, LLC.

Plastic and Coated Metal Surfaces

— CAUTION —

NEVER use abrasives or petroleum-based cleaners on any plastic or coated metal surfaces unless otherwise specified.

1. To remove ordinary dirt:

- a. Prepare a soapy solution comprised of household dishwashing liquid and water.
- b. Using a soft cloth or sponge, apply this soapy solution to the plastic and coated metal surfaces.

NOTE: To remove heavier dirt, apply Formula 409® or Fantastik® Spray Cleaner.

- c. Wipe area dry immediately using a soft cloth.

2. To remove stubborn stains:

- a. Apply a mild abrasive such as toothpaste or liquid tooth polish using a soft, white cloth.
- b. Using a chamois or moist sponge, remove all traces of the mild abrasive.
- c. Dry the area thoroughly to prevent marking.

*Formula 409 is a registered trademark of the Clorox Company.
Fantastik Spray Cleaner is a registered trademark of the Texize
Division of Dow Products, Inc.*

Metal Surfaces and Chrome Parts

For ordinary dirt, fingerprints, etc., use a non-abrasive, all-purpose cleaner.

Disinfecting

Upholstery

The J/V-Generation Chair's upholstery is comprised of material from the following manufacturers:

MOR-CARE™ Collection from MORBERN
MOR-GUARD from MORBERN was developed to meet the increased demands of hospital, contract and institutional use. Offers enhanced resistance to most common chemicals used for sterilization and cleaning in medical environments. Contains both an antibacterial and antimicrobial agents to provide resistance to a wide range of bacteria.

Naugahyde® BeautyGard™ from UNIROYAL
Naugahyde brand fabrics, Spirit II and Neochrome II with advanced BeautyGard contains an agent to protect it against bacterial and fungal microorganisms. This product has been formulated to achieve a superior level of disinfectability with disinfectant products containing sodium hypochlorite (common household bleach) diluted 1:10.

Mayfair/Savoy with Permablok® from Spradling®
Mayfair/Savoy fabrics with Permablok advanced vinyl protection contain an antimicrobial and antibacterial protection on an anti-stain finish that is easily cleaned. Mayfair/Savoy with Permablok provides exceptional disinfectability using a wide range of cleaning products.

Ultraleather™ from Ultrafabrics, LLC

- ◆ Disinfect with a 5:1 non-chlorinated bleach solution
- ◆ Potentially toxic aftercare not required

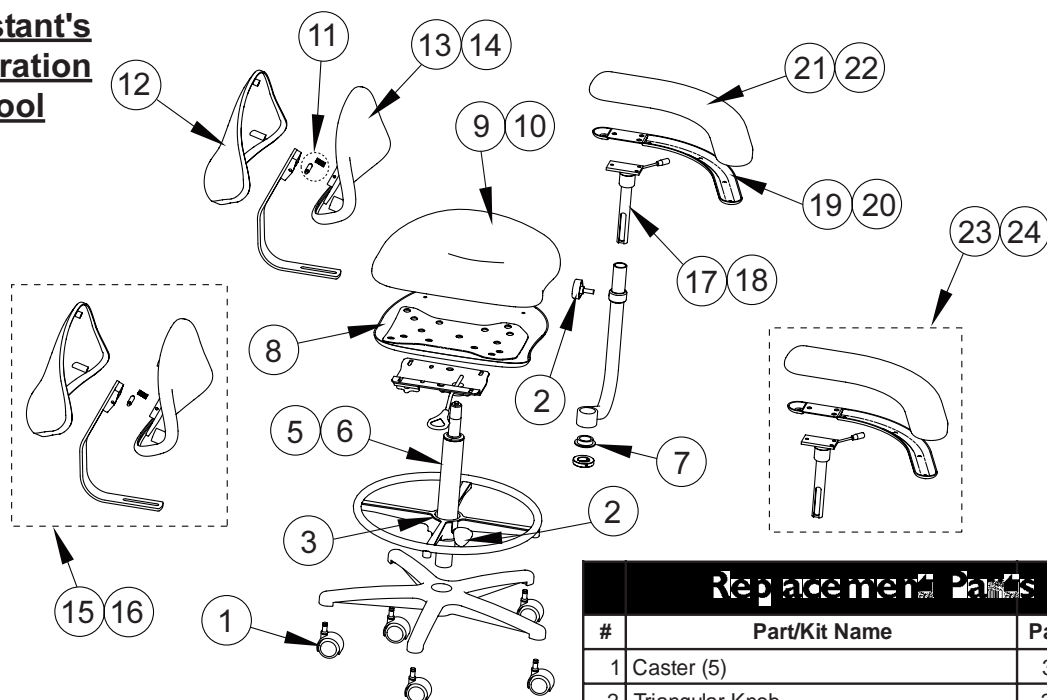
MOR-CARE is a trademark of Morbern, USA Inc. Naugahyde is a registered trademark and BeautyGard is a trademark of Uniroyal Engineered Products, Inc. Permablok® is a registered trademark of Spradling International, Inc.

All Other Chair Surfaces

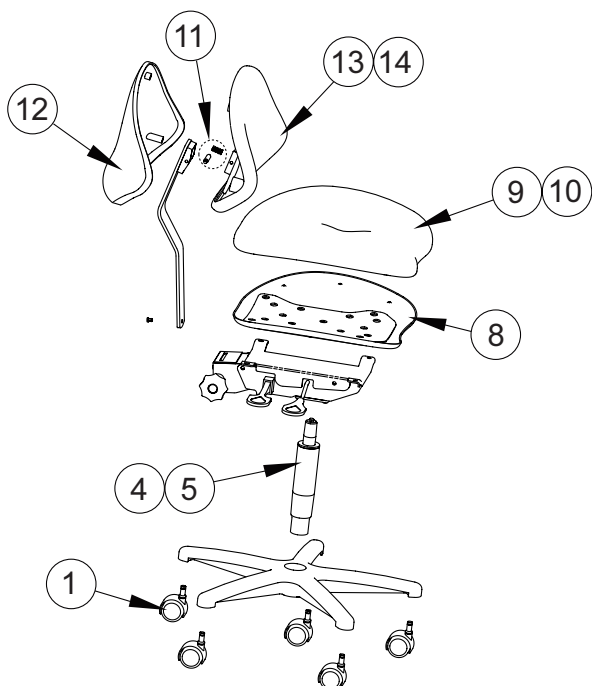
Cavicide™ is recommended for disinfecting all other surfaces of the J/V-Generation Chair. The use of any disinfectant, other than Cavicide, may cause premature staining, discoloration or damage to the J/V-Generation Chair's materials.

Cavicide is a trademark of Micro Aseptic Products, Inc.

Assistant's Generation Stool



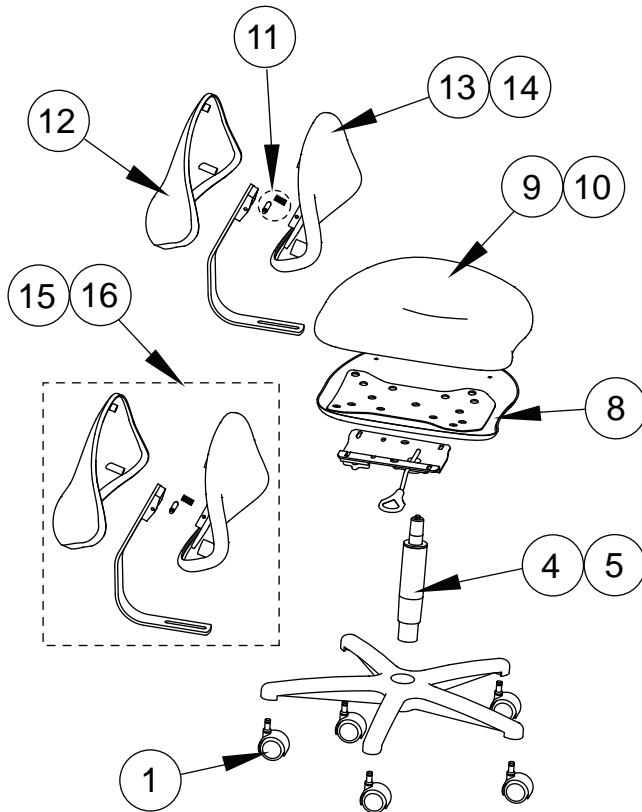
Doctor's Generation Stool



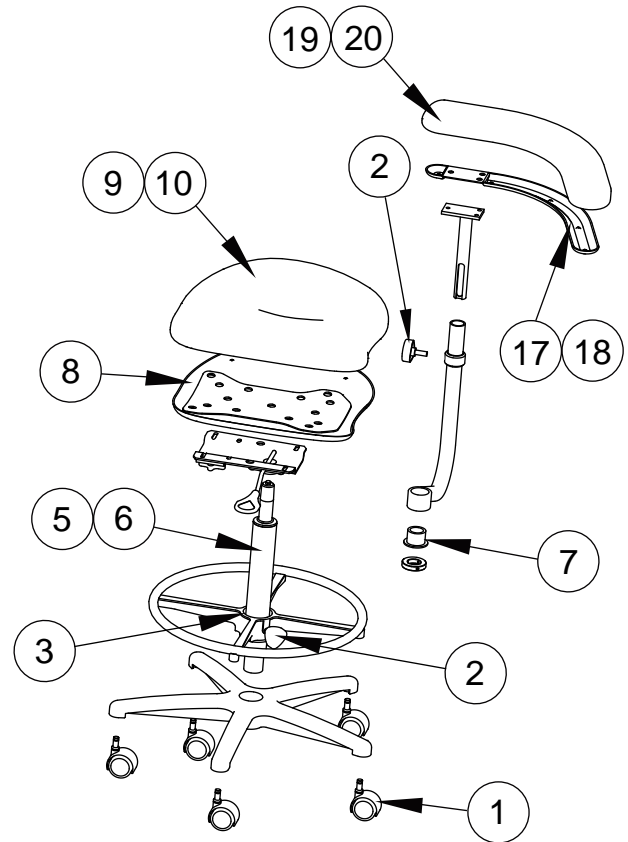
Replacement Parts

#	Part/Kit Name	Part/Kit No.
1	Caster (5)	3802-161
2	Triangular Knob	3802-162
3	Footring Bushing	3802-072
4	Cylinder, Standard Doctor's	3802-163
5	Cylinder, Optional, 20" - 28"	3802-164
6	Cylinder, Standard Assistant's	3802-165
7	Gooseneck Bushing	3802-166
8	Contoured Seat Cover w/Screws	3802-167
9	Contoured Seat Upholstery	3801-728
10	Contoured Set Upholstery, Ultra Leather	3802-133
11	Back Hardware (Spring & Spring Pin)	3802-168
12	Back Cover	3802-169
13	Back Upholstery	3802-170
14	Back Upholstery, Ultra Leather	3802-171
	Round Seat Upholstery	3801-726
	Round Seat Upholstery, Ultra Leather	3802-132
15	Complete Assistant's Back	3531-109
16	Complete Asst. Back, Ultra Leather	3531-110
17	Left Hand Stopcell	3802-172
18	Right Hand Stopcell	3802-173
19	LH Body Support Cover w/Screws	3802-174
20	RH Body Support Cover w/Screws	3802-175
21	Body Support Cushion	3801-877
22	Body Support Cushion, Ultra Leather	3802-134
23	Complete LH Body Support	3801-724
24	Complete RH Body Support	3801-725

Doctor's Stool



Assistant's Stool



#	Part/Kit Name	Part/Kit No.
1	Caster (5)	3802-161
2	Triangular Knob	3802-162
3	Footring Bushing	3802-072
4	Cylinder, Standard Doctor's	3802-163
5	Cylinder, Optional, 20" - 28"	3802-164
6	Cylinder, Standard Assistant's	3802-165
7	Gooseneck Bushing	3802-166
8	Contoured Seat Cover w/Screws	3802-167
9	Contoured Seat Upholstery	3801-728
10	Contoured Upholstery Seat, Ult. Leather	3802-133
11	Back Hardware (Spring & Spring Pin)	3802-168

#	Part/Kit Name	Part/Kit No.
12	Back Cover	3802-169
13	Back Upholstery	3802-170
14	Back Upholstery, Ultra Leather	3802-171
	Round Seat Upholstery	3801-726
	Round Seat Upholstery, Ultra Leather	3802-132
15	Complete Back	3531-109
16	Complete Back, Ultra Leather	3531-110
17	LH Body Support Cover w/Screws	3802-174
18	RH Body Support Cover w/Screws	3802-175
19	Body Support Cushion	3801-877
20	Body Support Cushion, Ultra Leather	3802-134



2500 Highway 31 South
Bay Minette, Alabama 36507
1-866-DTE-INFO
Fax: (251) 937-0461
www.dentalez.com